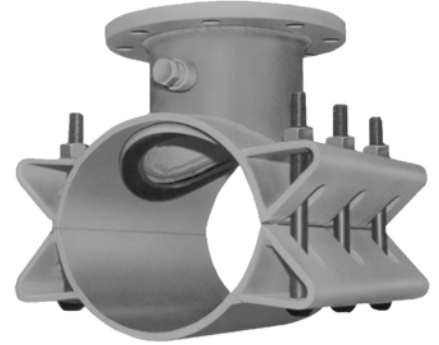


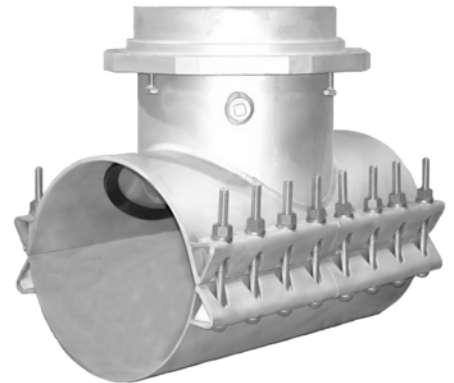
JCM Stainless Steel Tapping Sleeves with Outlet Seal Gasket Available With Flanged Outlet or Mechanical Joint Outlet* Stainless Steel or Carbon Steel

Rugged and Heavy Duty Stainless Tapping Sleeves Offer Extra Benefits.

- Heavy Duty Design...**
 Heavier construction and thicker metal provide extra reinforcement of the pipe and outlet. The extra bolting power and body thickness eliminate problems inherent with light weight sleeves.
- High Pressure Capability - High Safety Factor...**
 The broad, heavy hydromechanical gasket provides for high working pressure applications. They are also ideal for critical problem prone taps such as pump and lift stations, large diameter mains and large outlets.
- Large Sizes - High Pressure...**
 The premier sleeve for larger sizes of ductile iron, PVC, PE and steel pipe, these sleeves are capable of working pressure of 1.5 times the valves commonly used with these types of pipe. Higher pressure sleeves are available on request.
- Stronger - Yet Lighter Than Cast Sleeves...**
 Reduced weight aids in installation and handling as well as reducing load on the pipe.
- Extra Wide for Support and Stability...**
 Extra width and heavier neck and body material provide extra reinforcement of the outlet and extra stability during the tapping process.
- Affordable...**
 These stainless sleeves are surprisingly affordable in all sizes. Larger sleeves are priced less than ductile iron mechanical joint sleeves which offer less corrosion resistance and pressure capability.



**JCM 452 - 464 Stainless Tapping Sleeve
Flanged Outlet**



**JCM 459 - 465 Stainless Tapping Sleeve
Mechanical Joint Outlet**

MATERIAL SPECIFICATIONS

(Fitting dimensions - see JCM 412 Fabricated Tapping Sleeve)

Body: Stainless Steel, 18-8 Type 304. Optional 316 Stainless Steel.

Bolts: Stainless Steel, Type 304. Optional 316 Stainless Steel.

Branch Outlet: Heavy Stainless Steel Pipe. Optional 316 Stainless Steel.

Gasket: Gasket compounded for use water, salt solutions, mild acids, bases and sewage

452 Flange: CF8 Cast Stainless Steel - equivalent to 18-8 Type 304 Stainless Steel. Per ANSI/AWWA Standard C228-08. ANSI 150lb. Drilling, recessed for tapping valve per MSS-SP 60. Optional 316 Stainless Steel.

464 Flange: AWWA C207 Class D, ANSI 150lb. Drilling, recessed for tapping valve MSS-SP60.

459 MJ Outlet: CF8 Cast Stainless Steel - equivalent to 18-8 Type 304 Stainless Steel meets AWWA C-111/ANSI 21.11 Standard Dimensions. Optional 316 Stainless Steel.

465 MJ Outlet: Carbon Steel meets AWWA C-111/ANSI 21.11 Standard Dimensions

JCM Industries Tapping Sleeves meet or exceed the ANSI/AWWA C-223 and the MSS-SP 124 Standards as applicable.

*Licensed by PowerSeal Corporation U. S. Patent No. 6,227,234.



Stainless Steel Tapping Sleeves - Outlet Seal Gasket - Flanged Outlet

JCM 452 Stainless Steel Flanged Outlet

JCM 464 Carbon Steel Flanged Outlet

OUTLET SEAL GASKET • HIGH PRESSURE CAPABILITY • HIGH SAFETY FACTOR • LARGE SIZES

NOM. PIPE SIZE (IN.)	SLEEVE O.D. RANGE (IN.)	SLEEVE NUMBER	OUTLET SIZES	MODEL 452 STAINLESS STEEL FLANGE	MODEL 464 CARBON STEEL FLANGE	APPROX. WEIGHT EACH
4	4.50	0450	X 3	\$ 1,026.00	\$ 947.00	32
	4.80	0480	X 4	1,026.00	947.00	32
6	6.63	0663	X 3	1,089.00	1,007.00	74
	6.83 - 7.16	0690	X 4	1,089.00	1,007.00	76
	7.05 - 7.40	0720	X 6	1,258.00	1,117.00	82
	7.40 - 7.73	0745				
8	8.63	0863	X 3	1,177.00	1,080.00	83
	8.98 - 9.37	0905	X 4	1,177.00	1,080.00	85
	9.27 - 9.69	0940	X 6	1,322.00	1,176.00	88
				X 8	1,815.00	1,440.00
10	9.83 - 10.25*	*1000	X 3	1,317.00	1,190.00	90
	10.64 - 10.86	1075	X 4	1,317.00	1,190.00	92
	11.03 - 11.47	1110	X 6	1,416.00	1,263.00	96
	11.36 - 11.80	1140	X 8	1,742.00	1,546.00	125
	11.76 - 12.24	1200	X 10	2,485.00	2,209.00	168
12	12.62 - 12.88	1275	X 3	1,334.00	1,208.00	98
			X 4	1,334.00	1,208.00	100
	13.13 - 13.60	1320	X 6	1,479.00	1,319.00	104
	13.60 - 14.09	1392	X 8	1,820.00	1,621.00	140
	14.08 - 14.56	1420	X 10	2,557.00	2,273.00	176
			X 12	3,995.00	2,853.00	216
14	14.59 - 15.08	1475	X 3	P. O. A.	P. O. A.	113
			X 4	Call JCM	Call JCM	115
	15.23 - 15.80	1530	X 6	800-527-8482	800-527-8482	116
	15.73 - 16.22	1600	X 8	903-832-2581	903-832-2581	150
	16.30 - 16.73	1650	X 10			190
			X 12			220
16	16.74 - 17.26	1684	X 3	P. O. A.	P. O. A.	113
			X 4	Call JCM	Call JCM	115
	17.33 - 17.87	1740	X 6	800-527-8482	800-527-8482	120
	17.88 - 18.43	1800	X 8	903-832-2581	903-832-2581	162
	18.62 - 19.19	1875	X 10			210
			X 12			230
18	18.87 - 19.45	1920	X 3	P. O. A.	P. O. A.	120
			X 4	Call JCM	Call JCM	122
	19.41 - 20.01	1950	X 6	800-527-8482	800-527-8482	126
	20.00 - 20.60	2000	X 8	903-832-2581	903-832-2581	180
	20.29 - 20.94	2050	X 10			240
	20.93 - 21.57	2130	X 12			245
20	21.51 - 22.15	2160	X 3	P. O. A.	P. O. A.	131
			X 4	Call JCM	Call JCM	133
	22.16 - 22.81	2254	X 6	800-527-8482	800-527-8482	140
	22.78 - 23.45	2294	X 8	903-832-2581	903-832-2581	185
	23.46 - 24.16	2400	X 10			245
	24.15 - 24.85	2450	X 12			255
24	24.82 - 25.52	2502	X 3	P. O. A.	P. O. A.	143
			X 4	Call JCM	Call JCM	143
	25.71 - 26.41	2580	X 6	800-527-8482	800-527-8482	160
	26.55 - 27.25	2715	X 8	903-832-2581	903-832-2581	215
	27.26 - 27.96	2746	X 10			280
28.14 - 28.84	2834	X 12			312	
30	29.78 - 30.48	3000	X 3	P. O. A.	P. O. A.	163
			X 4	Call JCM	Call JCM	165
	30.48 - 31.18	3075	X 6	800-527-8482	800-527-8482	175
	31.52 - 32.22	3200	X 8	903-832-2581	903-832-2581	226
			X 10			295
			X 12			310

*These sizes not available with size on size outlets.

JCM 452/464 Tapping Sleeves furnished with test plugs unless otherwise specified.

For size on size outlets a 1/2" undersize shell cutter is required.

Larger Sleeve Ranges and Outlets Available.

For outlets 14" and larger, the tapping valve to be used must be specified to assure proper alignment recess dimension.



Certified to NSF/ANSI 61