

JCM Mechanical Joint Outlet Tapping Sleeves

**Now Available,
JCM Mechanical Joint Outlet*
Tapping Sleeves
Outlets 3” - 12”**

**Reduce Application Costs
Reduce Valve Inventory
Available Immediately
Provides Load Bearing Set Pins**



True Mechanical Joint Outlet - one cast piece creates a strong unit. No glued or attached parts to separate or cause misalignment. **JCM Mechanical Joint Outlets meet AWWA C-111/ANSI 21.11 Standard Dimensions.**

Load Bearing Set Pins - JCM Tapping Sleeves with MJ Outlet connections come furnished with load bearing set pins on the MJ outlet gland. After valve installation, the set pins are tightened against the face of the MJ valve flange, transferring any load and preventing movement or misalignment during or after the tap.

Strong pipe outlet - heavy duty neck outlet provides stability and a full size cutter bore. Standard lengths accommodate industry common tapping machine travel.

Consistent Inside Diameter Outlet - through the MJ flange outlet and through the pipe neck outlet. No modifications, changes or alterations that can interfere with cutter travel.

Quality Workmanship - JCM Tapping Sleeves with Mechanical Joint Outlets are manufactured of certifiable materials and are fabricated to the JCM standard quality recognized in the industry.

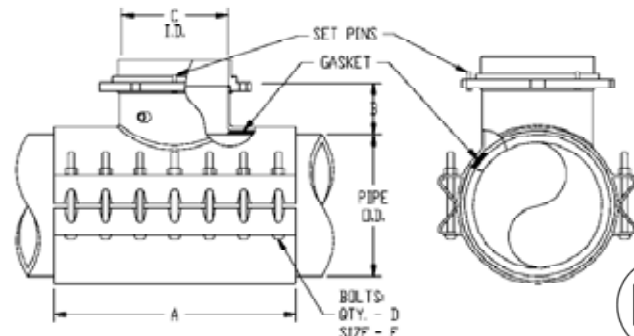
JCM 439 AND 469 MATERIAL SPECIFICATIONS:

- Body:** Stainless Steel, 18-8 Type 304
- Bolts:** Stainless Steel, Type 304
- Branch Outlet:** Heavy Stainless Steel Pipe
- Gasket:** Full circumferential Virgin Styrene-Butadiene Rubber (SBR) - Compounded for use with water, salt solutions, mild acids and bases. Per ASTM D-2000 M4AA 607. Standard temperature range from -40° to 150°F (-40° to 65° C) constant, maximum intermittent 180°F (82°C). Optional: EPDM available. For applications on high temperatures or chemical pipelines, contact JCM Industries Technical Services.
- 439 MJ Outlet:** CF8 Cast Stainless Steel - equivalent to 18-8 Type 304 Stainless Steel meets AWWA C-111/ANSI 21.11 Standard Dimensions.
- 469 MJ Outlet:** Carbon Steel meets AWWA C-111/ANSI 21.11 Standard Dimensions

JCM Industries Tapping Sleeves meet or exceed the ANSI/AWWA C-223 and the MSS-SP 124 Standards as applicable.
*Licensed by PowerSeal Corporation U. S. Patent No. 6,227,234.

JCM 439 & 469 TAPPING SLEEVE DIMENSIONS

OUTLET SIZE	A	B	C	D	E
3	15	5-1/4	3.32	10	5/8
4	15	5-1/4	4.26	10	5/8
6	15	5-1/4	6.36	10	5/8
8	21	5-1/4	8.33	14	5/8
10	27	5-1/4	10.42	18	5/8
12	30	5-1/4	12.39	20	5/8



Stainless Steel Tapping Sleeve - Full Circumferential Gasket - Mechanical Joint Outlet*
JCM 439 Stainless Steel Mechanical Joint Outlet
JCM 469 Carbon Steel Mechanical Joint Outlet
 JCM Mechanical Joint Outlets meet AWWA C-111/ANSI 21.11 Standard Dimensions

FULL CIRCUMFERENTIAL SEAL • EXTRA WIDTH • EXTRA BOLTING POWER

NOM. PIPE SIZE (IN.)	SLEEVE O.D. RANGE (IN.)	SLEEVE NUMBER	OUTLET SIZES	MODEL 439 STAINLESS STEEL MJ OUTLET	MODEL 469 CARBON STEEL MJ OUTLET	WIDTH OF SLEEVE	NUMBER OF BOLTS	APPR. WT. EACH (LBS.)	
4	4.40 - 4.60	0450							
	4.50 - 4.80	0465	X 3	\$ 1,309.00	\$ 1,178.00	15	10	36	
	4.74 - 5.00	0480	X 4	1,309.00	1,178.00	15	10	40	
	5.10 - 5.30	0520							
6	6.56 - 6.90++	0663	X 3	1,309.00	1,178.00	15	10	42	
	6.83 - 7.16	0690	X 4	1,309.00	1,178.00	15	10	47	
	7.05 - 7.40	0720	X 6	1,412.00	1,243.00	15	10	49	
	7.40 - 7.73	0745							
8	8.54 - 8.74	0863	X 3	1,350.00	1,279.00	15	10	48	
	8.60 - 9.05++	0900	X 4	1,350.00	1,279.00	15	10	51	
	8.98 - 9.37	0905	X 6	1,516.00	1,341.00	15	10	54	
	9.27 - 9.69	0940	X 8	2,103.00	1,589.00	21	14	78	
10	9.83 - 10.25+	1000	X 3	1,543.00	1,481.00	15	10	52	
	10.64 - 10.86	1075	X 4	1,543.00	1,481.00	15	10	55	
	11.00 - 11.40	1110	X 6	1,725.00	1,559.00	15	10	60	
	11.36 - 11.80	1140	X 8	2,140.00	1,852.00	21	14	82	
	11.76 - 12.24	1200	X 10***	3,327.00	3,196.00	27	18	125	
12	12.62 - 12.88	1275	X 3	1,718.00	1,665.00	15	10	57	
	12.75 - 13.20++	1300**	X 4	1,718.00	1,665.00	15	10	60	
	13.10 - 13.50	1320	X 6	1,954.00	1,798.00	15	10	64	
	13.70 - 14.09	1392	X 8	2,477.00	2,208.00	21	14	90	
	14.08 - 14.40	1420	X 10***	3,138.00	2,887.00	27	18	138	
				X 12***	3,385.00	3,196.00	30	20	161
14	15.20 - 15.60	1530	X 3	2,011.00	1,987.00	15	10	67	
	15.80 - 16.20	1600	X 4	2,011.00	1,987.00	15	10	70	
	16.38 - 16.78	1650	X 6	2,250.00	2,202.00	15	10	85	
				X 8	2,735.00	2,675.00	21	14	114
				X 10***	3,454.00	3,391.00	27	18	150
				X 12***	3,784.00	3,776.00	30	20	171
16	17.40 - 17.80	1740	X 3	2,392.00	2,376.00	15	10	73	
	17.75 - 18.15	1800	X 4	2,392.00	2,376.00	15	10	78	
	18.58 - 18.98	1875	X 6	2,763.00	2,725.00	15	10	90	
				X 8	3,053.00	2,996.00	21	14	126
				X 10***	3,813.00	3,756.00	27	18	163
				X 12***	4,086.00	4,037.00	30	20	175
18	19.30 - 19.70	1950	X 3	2,392.00	2,376.00	15	10	75	
	19.80 - 20.20	1990	X 4	2,392.00	2,376.00	15	10	80	
	21.20 - 21.40	2130	X 6	2,763.00	2,725.00	15	10	90	
				X 8	3,245.00	3,191.00	21	14	130
20	21.40 - 21.80	2160	X 3	2,521.00	2,503.00	15	10	80	
	21.90 - 22.30	2206	X 4	2,521.00	2,503.00	15	10	85	
	22.30 - 22.70	2250	X 6	2,764.00	2,731.00	15	10	92	
				X 8	3,277.00	3,222.00	21	14	136
24	23.45 - 23.85	2360	X 3	2,651.00	2,633.00	15	10	100	
	25.60 - 26.00	2580	X 4	2,651.00	2,633.00	15	10	105	
	26.20 - 26.60	2632	X 6	2,948.00	2,914.00	15	10	125	
				X 8	3,556.00	3,507.00	21	14	150

+NOTE: THIS SIZE NOT AVAILABLE WITH A SIZE ON SIZE OUTLET.

++NOTE: RECOMMENDED FOR IPS PVC, STEEL, C-900 PVC, DUCTILE IRON PIPE DIAMETERS. NOT RECOMMENDED FOR PIT CAST IRON PIPE.

FOR OVERSIZED OR PIT CAST IRON PIPE, SEE NEXT LARGER RANGE.

**NOTE: NOT AVAILABLE IN 10" OR 12" OUTLET SIZES

***NOTE: 10" & 12" OUTLETS, MAXIMUM WORKING PRESSURE 150 PSI, MAXIMUM TEST PRESSURE 200 PSI.



Certified to NSF/ANSI 61

*Licensed by PowerSeal Corporation U. S. Patent No. 6,227,234