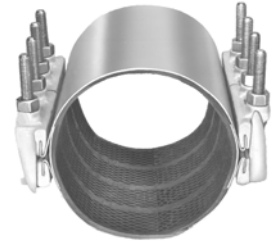


# JCM 102 Extended Range Universal Clamp Couplings

## JCM 172 Removeable Lug Extended Range UCC



JCM 102 Extended Range UCC - for systems with asbestos-cement and cast iron pipe or oversize pipe.  
 JCM 172 Removeable Lug System Ext. Range UCC - Removeable lug system accommodates rockbound soils, crowded underground utilities, restricted, narrow spaced piping galleries and limited excavation applications.

Image reflects 12" width

### Double Band Clamps

Nom. Pipe Size	Clamp O.D. Range	102 Attached Lug	172 Removeable Lug	Clamp Width - Approximate Weight						
				6"	7"	12"	15"	18"	24"	30"
		Clamp Number	Lbs.#	Lbs.#	Lbs.#	Lbs.#	Lbs.#	Lbs.#	Lbs.#	
4	4.44 - 5.24 4.74 - 5.57	0450 0480		\$171.40	186.80	291.70	353.90	447.90	552.70	726.00
				16#	20#	32#	40#	48#	64#	80#
6	6.62 - 7.42 6.84 - 7.64	0663 0690		199.60	218.30	321.40	410.60	535.70	634.40	833.00
				16#	20#	32#	40#	48#	64#	80#
8	8.62 - 9.42 8.99 - 9.79	0863 0905		234.30	246.30	361.90	467.80	600.70	695.30	955.30
				17#	21#	34#	43#	51#	68#	85#
10	10.72 - 11.72 11.04 - 12.24	1075 1110		-	-	487.70	-	734.30	981.20	1,248.10
						37#		52#	74#	80#
12	12.72 - 13.92 13.14 - 14.34 13.65 - 14.65	1275 1320 1365		-	-	518.80	-	774.90	1,082.60	1,363.80
						55#		80#	106#	132#
14	15.20 - 16.20	1530		-	-	722.40	-	1,169.20	1,537.70	2,110.50
						58#		87#	106#	145#
14 - 16	16.00 - 17.00 17.20 - 18.20	1600 1740		-	-	763.70	-	1,216.50	1,709.20	2,246.20
						59#		89#	108#	148#
16 - 18	18.40 - 19.40	1846		-	-	792.30	-	1,258.40	1,800.10	2,336.70
						62#		95#	124#	158#
18 - 20	19.40 - 20.40 20.40 - 21.40	1950 2050		-	-	805.80	-	1,306.70	2,142.50	2,377.80
						63#		95#	126#	158#
20 - 22	21.40 - 22.40 22.50 - 23.60	2160 2260		-	-	853.20	-	1,390.30	2,274.60	2,517.00
						67#		100#	134#	168#
<b>Number of Bolts</b>				<b>4</b>	<b>4</b>	<b>8</b>	<b>8</b>	<b>12</b>	<b>16</b>	<b>20</b>

### Multi-Band Clamps

24	23.80 - 25.00 25.50 - 26.70 27.90 - 29.10	2400 2580 2800		-	-	1,374.30	-	1,986.60	3,327.10	4,030.60
						93#		140#	186#	233#
24 - 30	29.80 - 31.00 31.70 - 32.90	3000 3200		-	-	1,661.50	-	2,455.50	3,496.30	4,588.90
						98#		147#	196#	245#
36	37.85 - 39.20	3830		-	-	1,819.80	-	2,733.40	3,926.60	5,188.90
						117#		175#	234#	292#

#### HOW TO ORDER

- Determine O.D. of pipe.
- Select proper clamp O.D. range and band width.
- Determine Model Number.
- Specify clamp number. Model 102 or 172 (Removeable Lug).  
**Example:** To fit Cast Iron pipe, 6.90 O.D. with 6" width,  
 order: 102-0690-6 or 172-0690-6

#### Available Options Upon Request Models 101-171-102-172

- Pipe sizes and ranges not listed
- Stainless Steel Bolts
- Conductive Buttons
- Specialty Gaskets
- Tapped clamps, see page 14



Clamps do not prevent lateral movement of pipe. Applications in which the pipe may move out of the clamp, proper anchorage of the pipe must be provided.