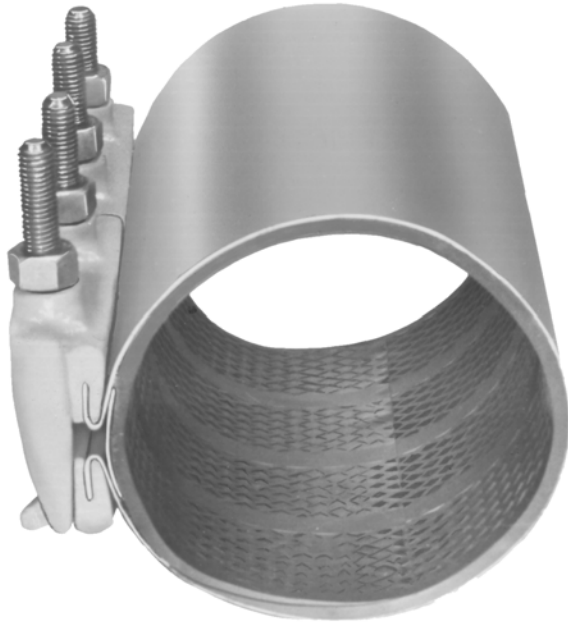


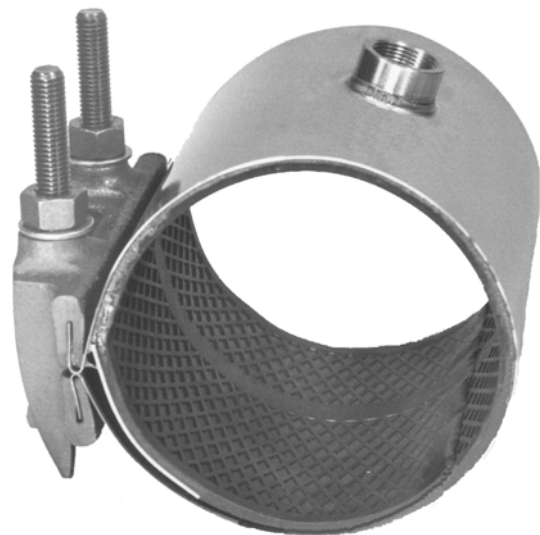
JCM

JCM Industries, Inc.
Gas Repair Clamps and Gas Service Clamps
for
Cast Iron and Steel Pipe



JCM 121 Gas Repair Clamp

JCM 123 Gas Service Clamp



JCM Industries now offers gas repair clamps and gas service clamps for pipe sizes 2" through 12". These popular and economical clamps provide a full circumferential seal for permanent repair of steel and cast iron pipelines. No loose parts make installation quick and easy.

JCM INDUSTRIES, INC.

NEW ENGINEERING . . .

Advances . . .

Economy, Versatility, Dependability

JCM high performance Gas Repair Clamps and Gas Service Clamps assure fast permanent repairs and service connections on cast iron and steel pipe. The heavy duty, design provides consistent, reliable performance time after time. JCM Gas Repair Clamps and Gas Service Clamps meet or exceed the requirements of D.O.T Code 192. These clamps can also be used on water, oil and sewage.

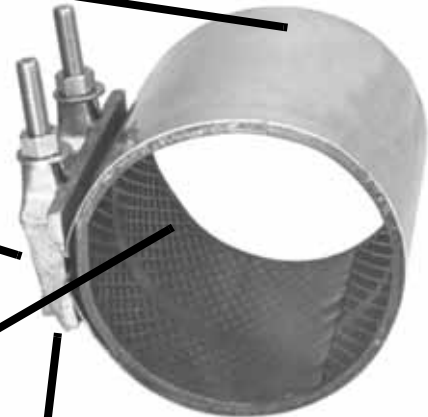
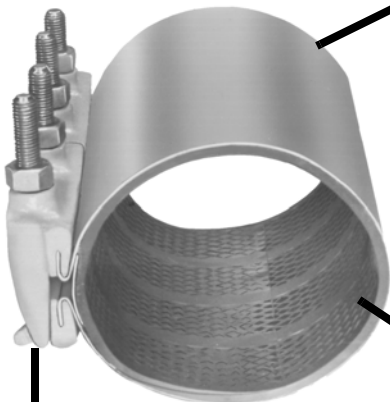
Balanced design assures consistent reliable performance time after time. Low profile lugs with mutually supporting sliding fingers provide distortion free tightening and high torque capability for extra sealing power. Positive attachment of the stainless band to the lugs eliminates mechanical weaknesses such as band slippage, cracked lugs or clamp failure from over tightening bolts. The heavy gridded gasket with a recessed bridge plate provides even sealing pressure around the circumference of the pipe and extra sealing capacity on rough, pitted pipe.

Corrosion resistant, high strength low alloy bolts and nuts (AWWA C-111, ANSI 21.11) are standard. Optional 18-8 Type 304 Stainless Steel available. Drop in bolts means no loose parts.

Type 304 Stainless Steel band conforms to pipe irregularities maintaining sealing pressure over entire gasket.

Stainless Steel, 18-8 Type 304 Drop-in bolts have high arc swing-in design for ease of installation. Permanently coated nuts prevent galling. Lug design facilitates easy bolt replacement if necessary. Clamp sizes 10" and larger utilize heavier bolts.

Stainless Steel Band, 18-8 Type 304 and CF8M Stainless Steel Lug (equivalent to 18-8 Type 16 Stainless) are Heliarc welded (TIG weld) to form a permanent fusion, and then fully passivated to return the welded stainless steel to its original chromium state.



Low profile Ductile Iron Lugs (ASTM A536) with mutually supporting sliding fingers provide distortion free tightening over wide range.

Positive attachment of band to lugs eliminates mechanical weaknesses and band pull-out.

Gridded gasket with long tapered ends and recessed bridge plate assures even gasket pressure throughout range - without wrinkling or crimping. Compounded for use with gas, oil and sewage.

Low profile stainless steel lugs with mutually supporting sliding fingers provide distortion free tightening over wide range. The use of multiple lug combinations to make longer length clamps eliminates lug warpage and twisting on installation involving pipe deflection.

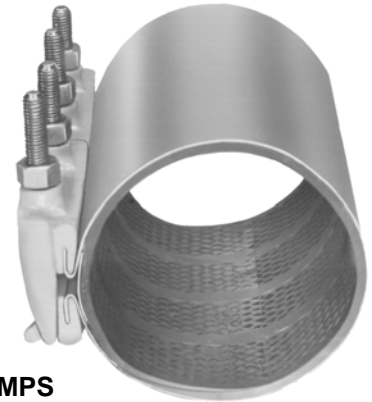
Meets Department of Transportation Code 192

Patent 4,334,140; 276,308

Review your preventative maintenance and emergency preparedness program. If what you are looking for is **DEPENDABILITY** and **MORE ANSWERS FOR THE DOLLAR** then JCM Industries' Universal Clamp Coupling should be part of your program. For specific recommendations or further information contact JCM Industries or your nearest distributor.

JCM 121 GAS REPAIR CLAMPS

This popular and economical clamp provides a full circumferential seal which permanently repairs cast iron and steel gas service lines. This clamp features positive attachment of the stainless band to the lugs, drop-in-bolts and a heavy gridded gasket. These fittings meet the Department of Transportation Code 192.



121 GAS REPAIR CLAMPS

NOM. PIPE SIZE (IN.)	CLAMP O.D. RANGE (IN.)	WIDTH (IN.)	CLAMP NUMBER	WT. EA.
2	2.35 - 2.63	6	121-0238- 6	7
		7-1/2	121-0238- 7	9
		12	121-0238-12	15
		15	121-0238-15	18
2-1/4 - 2-1/2	2.70 - 3.13	6	121-0275- 6	8
		7-1/2	121-0275- 7	9
		12	121-0275-12	15
		15	121-0275-15	19
3	3.46 - 3.70	6	121-0350- 6	8
		7-1/2	121-0350- 7	10
		12	121-0350-12	16
		15	121-0350-15	20
4	3.73 - 4.13	6	121-0400- 6	8
		7-1/2	121-0400- 7	10
		12	121-0400-12	16
		15	121-0400-15	20
4	4.45 - 4.75	6	121-0450- 6	9
		7-1/2	121-0450- 7	11
		12	121-0450-12	17
		15	121-0450-15	21
4	4.74 - 5.14	6	121-0480- 6	9
		7-1/2	121-0480- 7	11
		12	121-0480-12	18
		15	121-0480-15	22
		18	121-0480-18	26
		30	121-0480-30	44
6	6.56 - 6.96	6	121-0663- 6	10
		7-1/2	121-0663- 7	12
		12	121-0663-12	19
		15	121-0663-15	24
		18	121-0663-18	29
		30	121-0663-30	48
6	6.85 - 7.25	6	121-0690- 6	10
		7-1/2	121-0690- 7	12
		12	121-0690-12	19
		15	121-0690-15	24
		18	121-0690-18	29
		30	121-0690-30	48
8	8.54 - 8.94	7-1/2	121-0863- 7	13
		12	121-0863-12	21
		15	121-0863-15	26
		18	121-0863-18	32
		30	121-0863-30	53

121 GAS REPAIR CLAMPS

NOM. PIPE SIZE (IN.)	CLAMP O.D. RANGE (IN.)	WIDTH (IN.)	CLAMP NUMBER	WT. EA.
8	8.99 - 9.39	7-1/2	121-0905- 7	13
		12	121-0905-12	21
		15	121-0905-15	27
		18	121-0905-18	32
		30	121-0905-30	53
10	10.60 - 11.00	7-1/2	121-1075- 7	18
		12	121-1075-12	34
		15	121-1075-15	36
		18	121-1075-18	48
		30	121-1075-30	72
10	11.04 - 11.44	7-1/2	121-1110- 7	18
		12	121-1110-12	34
		15	121-1110-15	36
		18	121-1110-18	50
		30	121-1110-30	72
12	12.62 - 13.02	7-1/2	121-1275- 7	20
		12	121-1275-12	37
		15	121-1275-15	40
		18	121-1275-18	52
		30	121-1275-30	80
12	13.10 - 13.50	7-1/2	121-1320- 7	20
		12	121-1320-12	37
		15	121-1320-15	40
		18	121-1320-18	52
		30	121-1320-30	80

JCM Gas Repair and Gas Service Clamps meet the D.O. T. Code 192.

MATERIAL SPECIFICATIONS:

LUG: Ductile Iron per ASTM A536

BAND: Stainless Steel, 18-8 Type 304

BOLTS: Corrosion resistant, high strength low alloy (AWWA C-111, ANSI 21.11).
Optional Stainless Steel 18-8 Type 304.

GASKET: Buna-N Suitable for natural gas, oil, mild acids, bases, water and sewage.

Do Not use for repair of Polyethylene Gas Pipe. Suitable for reshaping and marking squeeze off locations.

JCM 123 Gas Service Clamps

JCM Gas Service Clamps combines the full circumferential seal with a threaded outlet for service connections and repair of damaged direct service connections.



123 GAS SERVICE CLAMPS

NOM. PIPE SIZE (IN.)	CLAMP O.D. RANGE (IN.)	WIDTH (IN.)	CLAMP NUMBER X ADD OUTLET TAP CODE	IP OUTLET TAP CODES		IP OUTLET TAP CODES			APPR. WT. EACH (LBS.)
				3/4"	1"	1-1/4"	1-1/2"	2"	
2	2.35 - 2.63	6 7-1/2	123-0238- 6 X -- 123-0238- 7 X --	06	08	N/A	N/A	N/A	7
				06	08	N/A	N/A	N/A	9
2-1/4 2-1/2	2.70 - 3.13	6 7-1/2	123-0275- 6 X -- 123-0275- 7 X --	06	08	N/A	N/A	N/A	8
				06	08	N/A	N/A	N/A	9
3	3.46 - 3.70	6 7-1/2	123-0350- 6 X -- 123-0350- 7 X --	06	08	N/A	N/A	N/A	8
				06	08	N/A	N/A	N/A	10
3	3.73 - 4.13	6 7-1/2	123-0400- 6 X -- 123-0400- 7 X --	06	08	N/A	N/A	N/A	10
				06	08	N/A	N/A	N/A	11
4	4.45 - 4.75	6 7-1/2 12	123-0450- 6 X -- 123-0450- 7 X -- 123-0450-12 X --	06	08	N/A	N/A	N/A	10
				06	08	N/A	N/A	N/A	11
				06	08	10	12	14	17
4	4.74 - 5.14	6 7-1/2 12	123-0480- 6 X -- 123-0480- 7 X -- 123-0480-12 X --	06	08	N/A	N/A	N/A	10
				06	08	N/A	N/A	N/A	11
				06	08	10	12	14	17
6	6.56 - 6.96	7-1/2 12	123-0663- 7 X -- 123-0663-12 X --	06	08	N/A	N/A	N/A	12
				06	08	10	12	14	19
6	6.85 - 7.25	7-1/2 12	123-0690- 7 X -- 123-0690-12 X --	06	08	N/A	N/A	N/A	12
				06	08	10	12	14	19
8	8.54 - 8.94	7-1/2 12	123-0863- 7 X -- 123-0863-12 X --	06	08	N/A	N/A	N/A	13
				06	08	10	12	14	21
8	8.99 - 9.39	7-1/2 12	123-0905- 7 X -- 123-0905-12 X --	06	08	N/A	N/A	N/A	13
				06	08	10	12	14	21
10	10.60 - 11.00	7-1/2 12	123-1075- 7 X -- 123-1075-12 X --	06	08	N/A	N/A	N/A	18
				06	08	10	12	14	34
10	11.04 - 11.44	7-1/2 12	123-1110- 7 X -- 123-1110-12 X --	06	08	N/A	N/A	N/A	18
				06	08	10	12	14	34
12	12.62 - 13.02	7-1/2 12	123-1275- 7 X -- 123-1275-12 X --	06	08	N/A	N/A	N/A	20
				06	08	10	12	14	37
12	13.10 - 13.50	7-1/2 12	123-1320- 7 X -- 123-1320-12 X --	06	08	N/A	N/A	N/A	20
				06	08	10	12	14	37

Pressure Rating of :
 121 Gas Repair Clamp Cast Iron Pipe:
 123 Gas Service Clamp 2" through 8" 100 PSI Gas
 10" through 12" 60 PSI Gas

Steel Pipe:
 2" through 8" 100 PSI Gas
 10" through 12" 60 PSI Gas

Do not use for repair of Polyethylene Gas Pipe. Suitable for reshaping and marking squeeze off locations.

JCM 151 ALL STAINLESS STEEL GAS REPAIR CLAMPS



All stainless steel construction provides extra corrosion resistance for permanent repair of piping systems which are exposed to hot soils or corrosive environments. These fittings meet the Department of Transportation Code 192.

151 GAS REPAIR CLAMPS

NOM. PIPE SIZE (IN.)	CLAMP O.D. RANGE (IN.)	WIDTH (IN.)	CLAMP NUMBER	WT. EA.
2	2.35 - 2.63	6	151-0238- 6	5
		7-1/2	151-0238- 7	6
		12	151-0238-12	10
		15	151-0238-15	12
2-1/4 - 2-1/2	2.70 - 3.13	6	151-0275- 6	5
		7-1/2	151-0275- 7	6
		12	151-0275-12	10
		15	151-0275-15	12
3	3.46 - 3.70	6	151-0350- 6	6
		7-1/2	151-0350- 7	7
		12	151-0350-12	11
		15	151-0350-15	13
4	3.73 - 4.13	6	151-0400- 6	6
		7-1/2	151-0400- 7	7
		12	151-0400-12	11
		15	151-0400-15	13
4	4.45 - 4.75	6	151-0450- 6	6
		7-1/2	151-0450- 7	7
		12	151-0450-12	11
		15	151-0450-15	13
4	4.74 - 5.14	6	151-0480- 6	6
		7-1/2	151-0480- 7	7
		12	151-0480-12	12
		15	151-0480-15	14
		18	151-0480-18	18
		30	151-0480-30	28
6	6.56 - 6.96	6	151-0663- 6	7
		7-1/2	151-0663- 7	8
		12	151-0663-12	13
		15	151-0663-15	16
		18	151-0663-18	20
		30	151-0663-30	30
6	6.85 - 7.25	6	151-0690- 6	7
		7-1/2	151-0690- 7	8
		12	151-0690-12	13
		15	151-0690-15	16
		18	151-0690-18	21
		30	151-0690-30	31
8	8.54 - 8.94	7-1/2	151-0863- 7	9
		12	151-0863-12	15
		15	151-0863-15	18
		18	151-0863-18	24
		30	151-0863-30	36

151 GAS REPAIR CLAMPS

NOM. PIPE SIZE (IN.)	CLAMP O.D. RANGE (IN.)	WIDTH (IN.)	CLAMP NUMBER	WT. EA.
8	8.99 - 9.39	7-1/2	151-0905- 7	9
		12	151-0905-12	15
		15	151-0905-15	19
		18	151-0905-18	24
		30	151-0905-30	38
10	10.60 - 11.00	7-1/2	151-1075- 7	14
		12	151-1075-12	24
		15	151-1075-15	28
		18	151-1075-18	36
10	11.04 - 11.44	30	151-1075-30	56
		7-1/2	151-1110- 7	14
		12	151-1110-12	24
		15	151-1110-15	28
10	11.04 - 11.44	18	151-1110-18	36
		30	151-1110-30	56
		7-1/2	151-1275- 7	16
		12	151-1275-12	27
12	12.62 - 13.02	15	151-1275-15	33
		18	151-1275-18	41
		30	151-1275-30	66
		7-1/2	151-1320- 7	16
12	13.10 - 13.50	12	151-1320-12	27
		15	151-1320-15	33
		18	151-1320-18	41
		30	151-1320-30	66

JCM Gas Repair and Gas Service Clamps meet the D.O.T. Code 192.

MATERIAL SPECIFICATIONS:

LUG: Cast Stainless Steel, 18-8 Type 304

BAND: Stainless Steel, 18-8 Type 304

BOLTS: Stainless Steel, 18-8 Type 304 specially lubricated to prevent seizing.

GASKET: Buna-N Suitable for natural gas, oil, mild acids, bases, water and sewage.

Do Not use for repair of Polyethylene Gas Pipe. Suitable for reshaping and marking squeeze off locations.

JCM 153 All Stainless Steel Gas Service Clamps



JCM All Stainless Gas Service Clamps combine the full circumferential seal with a threaded outlet and the corrosion resistance of 18-8 stainless steel for service connections and repair of damaged direct service connections in hot soils or corrosive environments.

153 ALL STAINLESS GAS SERVICE CLAMPS

NOM. PIPE SIZE (IN.)	CLAMP O.D. RANGE (IN.)	WIDTH (IN.)	CLAMP NUMBER	IP OUTLET TAP CODE		IP OUTLET TAP CODE			APPR. WT. EACH (LBS.)
				3/4"	1"	1-1/4"	1-1/2"	2"	
2	2.35 - 2.63	6 7-1/2	153-0238- 6 X --	06	08	N/A	N/A	N/A	5
			153-0238- 7 X --	06	08	N/A	N/A	N/A	6
2-1/4 2-1/2	2.70 - 3.13	6 7-1/2	153-0275- 6 X --	06	08	N/A	N/A	N/A	5
			153-0275- 7 X --	06	08	N/A	N/A	N/A	6
3	3.46 - 3.70	6 7-1/2	153-0350- 6 X --	06	08	N/A	N/A	N/A	6
			153-0350- 7 X --	06	08	N/A	N/A	N/A	7
3	3.73 - 4.13	6 7-1/2	153-0400- 6 X --	06	08	N/A	N/A	N/A	6
			153-0400- 7 X --	06	08	N/A	N/A	N/A	7
4	4.45 - 4.75	6 7-1/2 12	153-0450- 6 X --	06	08	N/A	N/A	N/A	6
			153-0450- 7 X --	06	08	N/A	N/A	N/A	7
			153-0450-12 X --	06	08	10	12	14	11
4	4.74 - 5.14	6 7-1/2 12	153-0480- 6 X --	06	08	N/A	N/A	N/A	6
			153-0480- 7 X --	06	08	N/A	N/A	N/A	7
			153-0480-12 X --	06	08	10	12	14	11
6	6.56 - 6.96	7-1/2 12	153-0663- 7 X --	06	08	N/A	N/A	N/A	8
			153-0663-12 X --	06	08	10	12	14	13
6	6.85 - 7.25	7-1/2 12	153-0690- 7 X --	06	08	N/A	N/A	N/A	8
			153-0690-12 X --	06	08	10	12	14	13
8	8.54 - 8.94	7-1/2 12	153-0863- 7 X --	06	08	N/A	N/A	N/A	9
			153-0863-12 X --	06	08	10	12	14	15
8	8.99 - 9.39	7-1/2 12	153-0905- 7 X --	06	08	N/A	N/A	N/A	9
			153-0905-12 X --	06	08	10	12	14	15
10	10.60 - 11.00	7-1/2 12	153-1075- 7 X --	06	08	N/A	N/A	N/A	14
			153-1075-12 X --	06	08	10	12	14	24
10	11.04 - 11.44	7-1/2 12	153-1110- 7 X --	06	08	N/A	N/A	N/A	14
			153-1110-12 X --	06	08	10	12	14	24
12	12.62 - 13.02	7-1/2 12	153-1275- 7 X --	06	08	N/A	N/A	N/A	16
			153-1275-12 X --	06	08	10	12	14	27
12	13.10 - 13.50	7-1/2 12	153-1320- 7 X --	06	08	N/A	N/A	N/A	16
			153-1320-12 X --	06	08	10	12	14	27

Pressure Rating of :
151 Gas Repair Clamps
153 Gas Service Clamps

Cast Iron Pipe:
2" through 8" 100 PSI Gas
10" through 12" 60 PSI Gas

Steel Pipe:
2" through 8" 100 PSI Gas
10" through 12" 60 PSI Gas

Do not use for repair of Polyethylene Gas Pipe. Suitable for reshaping and marking squeeze off locations.