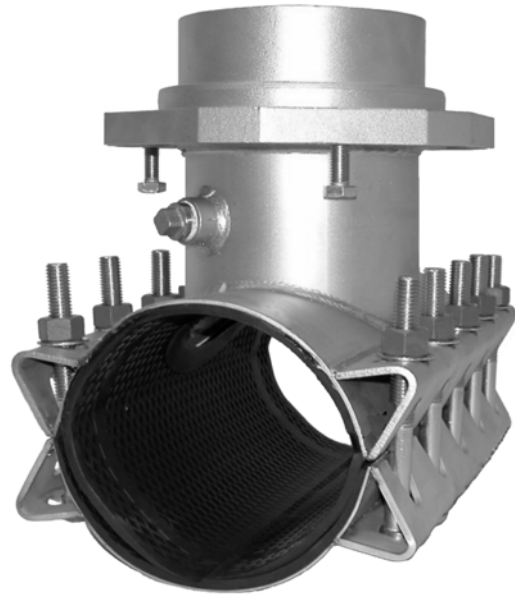


JCM Stainless Steel Tapping Sleeves with Mechanical Joint Outlet

**Now Available,
JCM Mechanical Joint Outlet*
Tapping Sleeves
Outlets 4" - 12"**

**Great JCM Quality,
Great JCM Delivery
Reduce Application Costs
Reduce Valve Inventory
Available Immediately
Provide Load Bearing Set Pins**



True Mechanical Joint Outlet - one cast piece creates a strong, corrosion resistant unit. No glued or attached parts to separate or cause misalignment. JCM Mechanical Joint Outlets meet AWWA C-111/ANSI 21.11 Standard Dimensions.

Durable - JCM Tapping Sleeves with Mechanical Joint Outlets are fabricated of quality materials for long term service.

Load Bearing Set Pins - JCM Tapping Sleeves with MJ Outlet connections come furnished with load bearing set pins on the MJ outlet gland. After valve installation, the set pins are tightened against the face of the MJ valve flange, transferring any load and preventing movement or misalignment during or after the tap.

Strong pipe outlet - heavy duty neck outlet provides stability and a full size cutter bore. Standard lengths accommodate industry common tapping machine travel.

Consistent Inside Diameter Outlet - through the MJ flange outlet and through the pipe neck outlet. No modifications, changes or alterations that can interfere with cutter travel.

Quality Workmanship - JCM Tapping Sleeves with Mechanical Joint Outlets are manufactured of certifiable materials and are fabricated to the JCM standard quality recognized in the industry.

JCM MJ OUTLET TAPPING SLEEVES AVAILABLE IN THE FOLLOWING CONFIGURATIONS

All 304 Stainless Steel (Models 439, 459)

All 316 Stainless Steel (Models 6439, 6459)

Stainless Body/Neck with Carbon Steel Outlet (Models 469, 465)

All Fabricated Carbon Steel (Models 419, 429)

JCM Tapping Sleeves meet or exceed the ANSI/AWWA C-223 and the MSS-SP 124 Standards as applicable.

*Licensed by PowerSeal Corporation U.S. Patent No. 6,227,234.

Stainless Steel Tapping Sleeve - Full Circumferential Gasket - Mechanical Joint Outlet*
JCM 439 Stainless Steel Mechanical Joint Outlet
JCM 469 Carbon Steel Mechanical Joint Outlet
JCM Mechanical Joint Outlets meet AWWA C-111/ANSI 21.11 Standard Dimensions

FULL CIRCUMFERENTIAL SEAL • EXTRA WIDTH • EXTRA BOLTING POWER

| NOM. PIPE SIZE (IN.) | SLEEVE O.D. RANGE (IN.) | MODEL 439 STAINLESS STEEL MJ OUTLET | MODEL 469 CARBON STEEL MJ OUTLET | OUTLET SIZES | WIDTH OF SLEEVE | NUMBER OF BOLTS | APPR. WT. EACH (LBS.) |
|----------------------|---|-------------------------------------|----------------------------------|---------------------|-----------------|-----------------|-----------------------|
| 4 | 4.40 - 4.60 | 439-0450 | 469-0450 | | | | |
| | 4.50 - 4.80 | 439-0465 | 469-0465 | X 3 [^] | 15 | 10 | 38 |
| | 4.74 - 5.00 | 439-0480 | 469-0480 | X 4 | 15 | 10 | 40 |
| | 5.10 - 5.30 | 439-0520 | 469-0520 | | | | |
| 6 | 6.56 - 6.90 ⁺⁺ | 439-0663 | 469-0663 | X 3 [^] | 15 | 10 | 45 |
| | 6.83 - 7.16 | 439-0690 | 469-0690 | X 4 | 15 | 10 | 47 |
| | 7.05 - 7.40 | 439-0720 | 469-0720 | X 6 | 15 | 10 | 49 |
| | 7.40 - 7.73 | 439-0745 | 439-0745 | | | | |
| 8 | 8.54 - 8.74 | 439-0863 | 469-0863 | X 3 [^] | 15 | 10 | 50 |
| | 8.60 - 9.05 ⁺⁺ | 439-0900 | 469-0900 | X 4 | 15 | 10 | 51 |
| | 8.98 - 9.37 | 439-0905 | 469-0905 | X 6 | 15 | 10 | 54 |
| | 9.27 - 9.69 | 439-0940 | 469-0940 | X 8 | 21 | 14 | 78 |
| 10 | 9.83 - 10.25 ⁺ | 439-1000 | 469-1000 | X 3 [^] | 15 | 10 | 52 |
| | 10.64 - 10.86 | 439-1075 | 469-1075 | X 4 | 15 | 10 | 55 |
| | 11.00 - 11.40 | 439-1110 | 469-1110 | X 6 | 15 | 10 | 60 |
| | 11.36 - 11.80 | 439-1140 | 469-1140 | X 8 | 21 | 14 | 82 |
| | 11.76 - 12.24 | 439-1200 | 469-1200 | X 10 ^{***} | 27 | 18 | 125 |
| 12 | 12.62 - 12.88 | 439-1275 | 469-1275 | X 3 [^] | 15 | 10 | 58 |
| | 12.75 - 13.20 ⁺⁺ | 439-1300 ^{**} | 469-1300 ^{**} | X 4 | 15 | 10 | 60 |
| | 13.10 - 13.50 | 439-1320 | 469-1320 | X 6 | 15 | 10 | 64 |
| | 13.70 - 14.09 | 439-1392 | 469-1392 | X 8 | 21 | 14 | 90 |
| | 14.08 - 14.40 | 439-1420 | 469-1420 | X 10 ^{***} | 27 | 18 | 138 |
| | | | | X 12 ^{***} | 30 | 20 | 161 |
| 14 | 15.20 - 15.60 15.80 - 16.20 16.38 - 16.78 | 439-1530 439-1600 439-1650 | 469-1530 469-1600 469-1650 | X 3 [^] | 15 | 10 | 68 |
| | | | | X 4 | 15 | 10 | 70 |
| | | | | X 6 | 15 | 10 | 85 |
| | | | | X 8 | 21 | 14 | 114 |
| | | | | X 10 ^{***} | 27 | 18 | 150 |
| | | | | X 12 ^{***} | 30 | 20 | 171 |
| 16 | 17.40 - 17.80 17.75 - 18.15 18.58 - 18.98 | 439-1740 439-1800 439-1875 | 469-1740 469-1800 469-1875 | X 3 [^] | 15 | 10 | 76 |
| | | | | X 4 | 15 | 10 | 78 |
| | | | | X 6 | 15 | 10 | 90 |
| | | | | X 8 | 21 | 14 | 126 |
| | | | | X 10 ^{***} | 27 | 18 | 163 |
| | | | | X 12 ^{***} | 30 | 20 | 175 |
| 18 | 19.30 - 19.70 19.80 - 20.20 21.20 - 21.40 | 439-1950 439-1990 439-2130 | 469-1950 469-1990 469-2130 | X 3 [^] | 15 | 10 | 80 |
| | | | | X 4 | 15 | 10 | 80 |
| | | | | X 6 | 15 | 10 | 90 |
| | | | | X 8 | 21 | 14 | 130 |
| 20 | 21.40 - 21.80 21.90 - 22.30 22.30 - 22.70 | 439-2160 439-2206 439-2250 | 469-2160 469-2206 469-2250 | X 3 [^] | 15 | 10 | 85 |
| | | | | X 4 | 15 | 10 | 85 |
| | | | | X 6 | 15 | 10 | 92 |
| | | | | X 8 | 21 | 14 | 136 |
| 24 | 23.45 - 23.85 25.60 - 26.00 26.20 - 26.60 | 439-2360 439-2580 439-2632 | 469-2360 469-2580 469-2632 | X 3 [^] | 15 | 10 | 105 |
| | | | | X 4 | 15 | 10 | 105 |
| | | | | X 6 | 15 | 10 | 125 |
| | | | | X 8 | 21 | 14 | 150 |

- [^]NOTE: 3" OUTLET IN STAINLESS STEEL ONLY (JCM MODEL 439)
- ⁺NOTE: THIS SIZE NOT AVAILABLE WITH A SIZE ON SIZE OUTLET.
- ⁺⁺NOTE: RECOMMENDED FOR IPS PVC, STEEL, C-900 PVC, DUCTILE IRON PIPE DIAMETERS. NOT RECOMMENDED FOR PIT CAST IRON PIPE. FOR OVERSIZED OR PIT CAST IRON PIPE, SEE NEXT LARGER RANGE.
- ^{**}NOTE: NOT AVAILABLE IN 10" OR 12" OUTLET SIZES
- ^{***}NOTE: MAXIMUM WORKING PRESSURE 150 PSI, MAXIMUM TEST PRESSURE 200 PSI.

*Licensed by PowerSeal Corporation U. S. Patent No. 6,227,234