

JCM 429 Fabricated Carbon Steel Tapping Sleeve Mechanical Joint Outlet*

JCM Mechanical Joint Outlets meet AWWA C-111/ANSI 21.11 Standard Dimensions

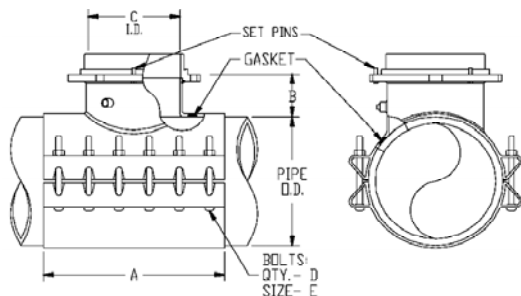
TYPE AND CLASS OF PIPE	NOM. PIPE SIZE (IN.)	O.D. RANGE (IN.)	CATALOG NUMBER	ADD OUTLET SIZE	APPR. WT. EACH (LBS.)	
PVC PIPE IPS SIZED SDR 26, 21 SCH. 40 CLASS 200, CLASS 160	4	4.50	429-0450	x 4	35	
	5	5.56	429-0556	x 4	35	
	6	6.63	429-0663	x 4 x 6	40 60	
	STEEL PIPE IPS SIZES, SCHEDULE PIPE	8	8.63	429-0863	x 4 x 6 x 8	45 56 71
		10	10.75	429-1075	x 4 x 6 x 8 x 10	92 96 125 168
		12	12.75	429-1275	x 4 x 6 x 8 x 10 x 12	100 104 140 176 216
C-900 PVC ONLY AWWA C-900 ALL CLASSES	4	4.80	429-0480	x 4	35	
	6	6.90	429-0690	x 4 x 6	40 60	
	8	9.05	429-0905	x 4 x 6 x 8	45 56 71	
	10	11.10	429-1110	x 4 x 6 x 8 x 10	92 96 125 168	
	12	13.20	429-1320	x 4 x 6 x 8 x 10 x 12	100 104 140 176 216	

429 Tapping Sleeves are furnished with test plugs unless otherwise specified. 429 Furnished standard Fusion Epoxy Coated with Hot Dip Galvanized Low Alloy Bolts; requires that a 1/2" undersized cutter be used.

*Licensed by PowerSeal Corporation U. S. Patent No. 6,227,234.

HOW TO ORDER - JCM TAPPING SLEEVES WITH MECHANICAL JOINT OUTLETS

1. Determine O.D. of pipe.
2. Select proper Sleeve O.D. range.
3. Specify catalog number and outlet size.
4. For Epoxy Coating add (E). For Stainless hardware add (SS). JCM 429 is standard Epoxy Coated.
Example: For PVC pipe with 08.63 O.D. with 6" outlet, order: 429-0863 x 6. For stainless steel hardware, add (SS).



JCM 429 FABRICATED TAPPING SLEEVE - MECHANICAL JOINT OUTLET

OUTLET	A	B	C	D	E
4	9*	5	5-1/32	6	5/8
6	12	5	7-1/32	8	5/8
8	15	5-1/8	9-1/32	10	5/8
10	21	5-1/2	11-1/16	14	5/8
12	24	5-3/4	13-1/16	16	5/8

*10" & 12" Nominal pipe sizes - dimension A is 12".