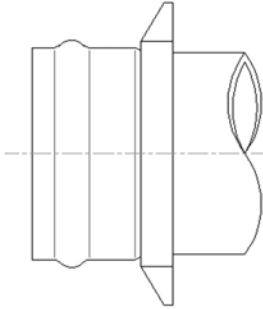


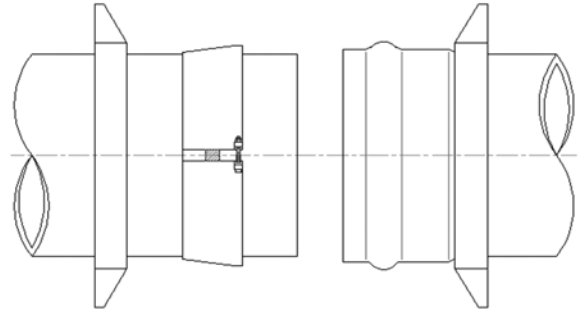
JCM

JCM 620 RESTRAINER INSTALLATION INSTRUCTIONS BELL JOINT RESTRAINER IPS PVC, C-900 PVC PIPE

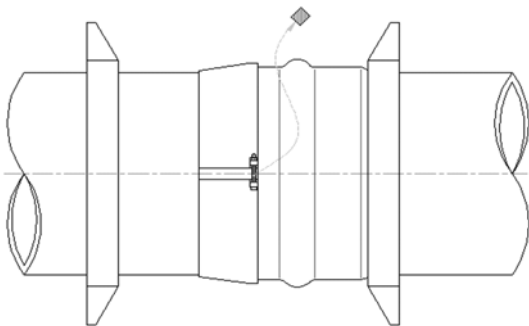
NOTE: DO NOT REMOVE WOOD SPACER - SEE INSTRUCTION STEP #2



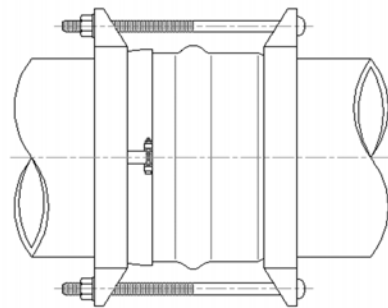
- 1) Slide one casing gland down the pipe barrel to seat against the bell slope (larger opening toward bell).



- 2) In order, slide the second casing gland and inner serrated ring onto the pipe spigot - connect the bell and spigot per standard pipe installation practices.



- 3) Position inner serrated ring against the bell face and remove the wooden spacer; tighten the positioning pin firmly (using allen wrench provided) until ring seats securely on pipe.



- 4) Slide the casing gland onto the inner serrated ring. Insert oval-neck bolts through corresponding gland holes and tighten to 65 ft./lbs.

NOTE:

**IF PIPE IS OUT OF ROUND ROTATE FITTING UNTIL THE BEST FIT IS ACHIEVED.
Pipe O.D.'s must be within industry set tolerances for proper restrainer installation.**

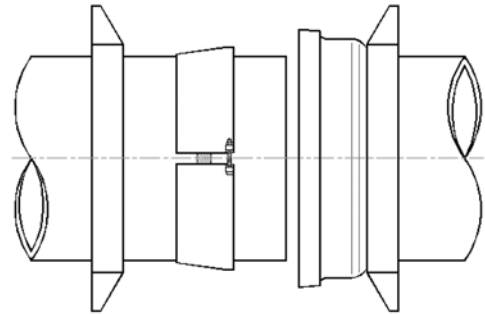
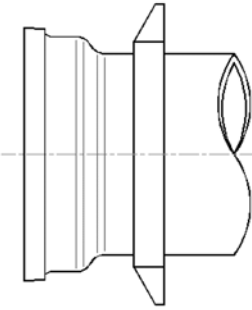
INT620PVC4-12/1105

JCM Industries / P. O. Box 1220 / Nash, TX 75569

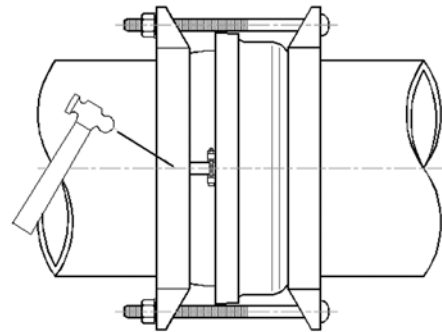
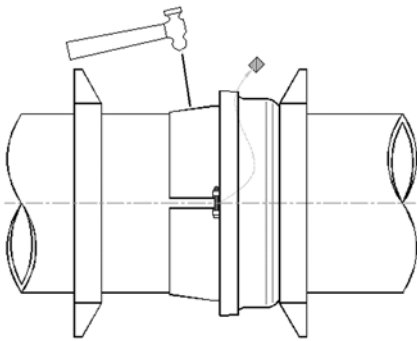
JCM

JCM 620 RESTRAINER INSTALLATION INSTRUCTIONS BELL JOINT RESTRAINER Ductile Iron Pipe

NOTE: DO NOT REMOVE WOOD SPACER - SEE INSTRUCTION STEP #2



- 1) Slide one casing gland down the pipe barrel to seat against the bell slope (larger opening toward bell).
- 2) In order, slide the second casing gland and inner serrated ring onto the pipe spigot - connect the bell and spigot per standard pipe installation practices.



- 3) Position inner serrated ring against the bell face and remove the wooden spacer; tighten the positioning pin firmly (using allen wrench provided) until ring seats securely on pipe. Hammer-set inner serrated ring at several places around ring and retighten the positioning pin firmly.
- 4) Slide the casing gland onto the inner serrated ring. Insert oval-neck bolts through corresponding gland holes and tighten to 65 ft./lbs. Hammer-set the casing gland (that is positioned over the inner serrated ring) at several places around the gland and tighten the nuts to 150 ft./lbs.

NOTE:

**IF PIPE IS OUT OF ROUND ROTATE FITTING UNTIL THE BEST FIT IS ACHIEVED.
Pipe O.D.'s must be within industry set tolerances for proper restrainer installation.**

INT620DI4-12/1105

JCM Industries / P. O. Box 1220 / Nash, TX 75569