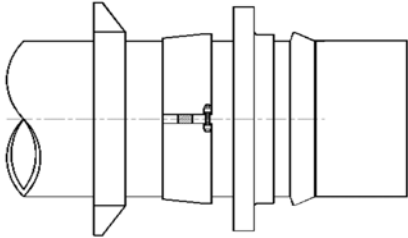


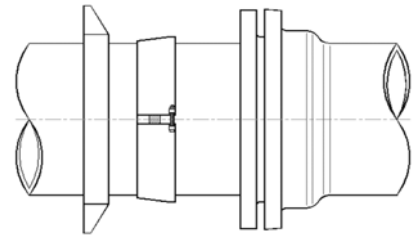
JCM

JCM 610 RESTRAINER INSTALLATION INSTRUCTIONS FITTING RESTRAINER Ductile Iron Pipe

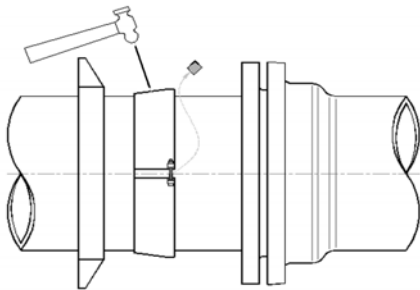
NOTE: DO NOT REMOVE WOOD SPACER - SEE INSTRUCTION STEP #2



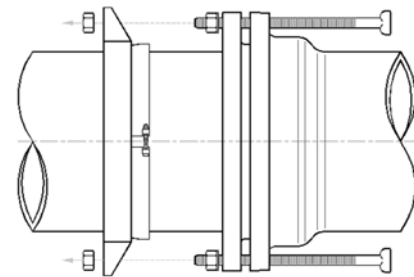
- 1) Install, in order, onto pipe spigot: casing gland, inner serrated ring, mechanical joint follower gland and gasket.



- 2) Insert pipe spigot end into the Mechanical Joint (MJ) fitting, sliding the MJ gasket and gland forward to seat into the fitting cavity.

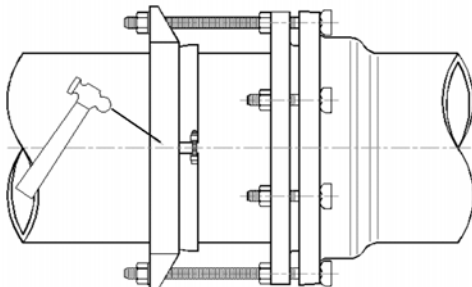


- 3) Position inner serrated ring 2-1/2" from MJ gland, adjust serrated ring restrainer square with pipe and remove wooden spacer, tighten positioning pin firmly (using allen wrench provided) until ring is secure on pipe. Hammer-set inner serrated ring at several places round the ring and retighten the positioning pin firmly.

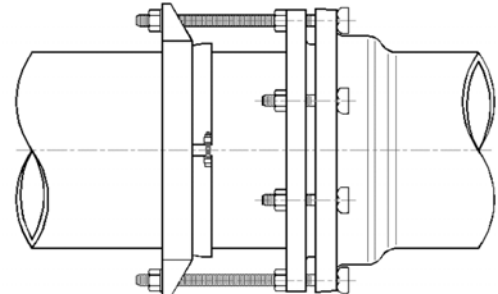


- 4) Slide casing gland forward to seat onto the inner ring. Insert the extra long T-Bolts through the MJ fitting and gland. After placing a nut behind the follower gland, align the bolts through the casing gland. Tighten the back (second) nut to 65 ft./lbs.

Note: On 10" & 12" - a stud is furnished where T-Bolt would have interfered with bend of MJ fitting.



- 5) Hammer-set the casing gland at several places around the gland and tighten the back nuts to 150 ft./lbs.



- 6) Install the remaining MJ bolts and evenly tighten all follower gland nuts to AWWA standards for mechanical joints.

NOTE: IF PIPE IS OUT OF ROUND, ROTATE FITTING UNTIL THE BEST FIT IS ACHIEVED. Pipe O.D.'s must be within industry set tolerances for proper restrainer installation.

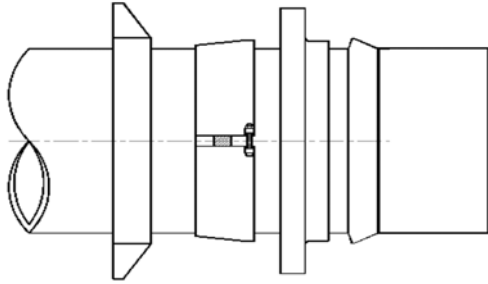
INT610DI4-12/1105

JCM Industries / P. O. Box 1220 / Nash, TX 75569

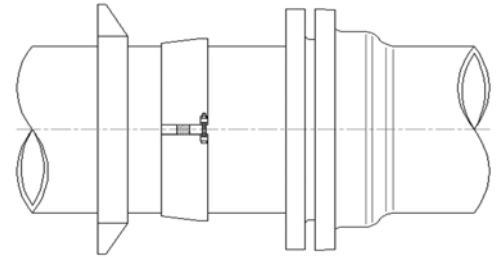
JCM

JCM 610 RESTRAINER INSTALLATION INSTRUCTIONS FITTING RESTRAINER IPS PVC, C-900 PVC & HDPE PIPE

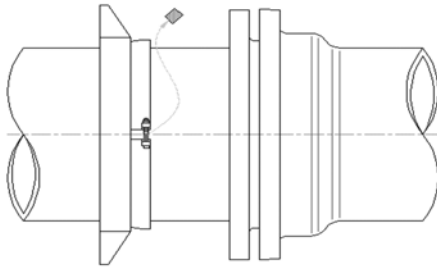
NOTE: DO NOT REMOVE WOOD SPACER - SEE INSTRUCTION STEP #2



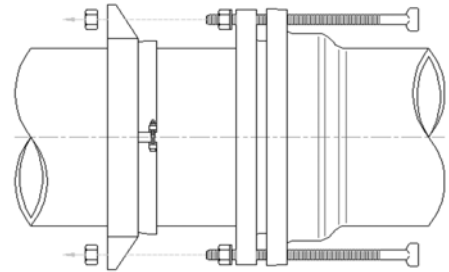
- 1) Install, in order, onto pipe spigot: casing gland, inner serrated ring, mechanical joint follower gland and gasket.



- 2) Insert pipe spigot end into the Mechanical Joint (MJ) fitting, sliding the MJ gasket and gland forward to seat into the fitting cavity.



- 3) Position inner serrated ring 2-1/2" from MJ gland, adjust serrated ring restrainer square with pipe and remove wooden spacer, tighten positioning pin firmly (using allen wrench provided) until ring is secure on pipe. Slide casing gland forward to seat onto the inner ring.

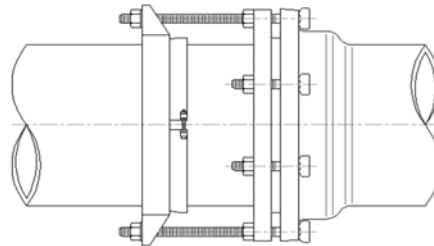


- 4) Insert the extra long T-Bolts through the MJ fitting and gland. After placing a nut behind the follower gland, align the bolts through the casing gland. Tighten the back (second) nut to 65 ft./lbs.

NOTE:

**IF PIPE IS OUT OF ROUND
ROTATE FITTING UNTIL
THE BEST FIT IS ACHIEVED.**

**Pipe O.D.'s must be within
industry set tolerances for
proper restrainer installation.**



- 5) Install the remaining MJ bolts and evenly tighten all follower gland nuts to AWWA standards for mechanical joints.

INT610PVC4-12/1105